



POST PRESS  
MAILROOM  
BOOKBINDERY

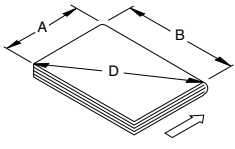
RS 11 - ENTRY BINDERY STACKER

**RIMA  SYSTEM**

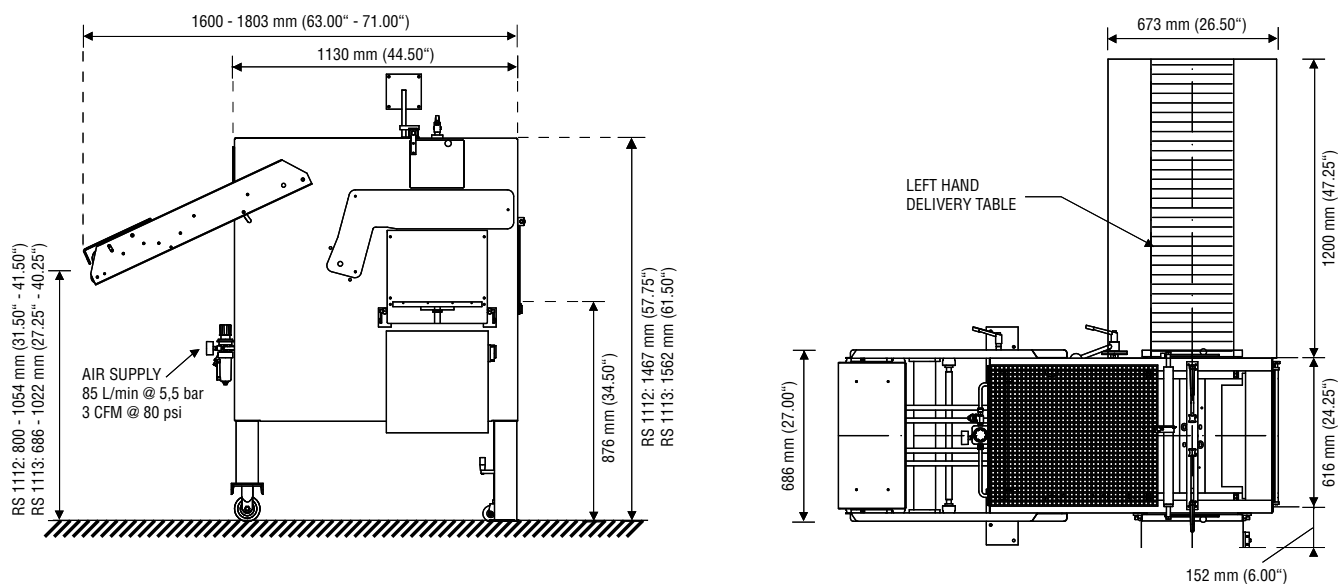
## Requirements & Solutions

Awareness of quality and costs are essential reasons for success. The goal for the bookbindery is to set up reliable on-line production with reduced manual labor even behind slower machines. The new RS 11 is the best solution for automatic stacking behind saddle stitchers, perfect binders and inserters. The solid and simple design makes the RS 11 a real alternative for all bookbinderies with limited budgets. The RS 11 integrates counting, jogging and compensated stacking. The quick non-tool setup, variable delivery and minimum space requirements allow effective application in various configurations.

## Technical Data

Formats		min	max
	"A" Dimension	102 mm (4.00")	321 mm (12.63")
	"B" Dimension	152 mm (6.00")	500 mm (19.68")
	"D" Dimension	limited by "A" & "B"	588 mm (23.10")
	Thickness	1 mm (0.04")	32 mm (1.25")
Speed	product permitting		12 000 products per hour
Stack height RS 1112	upper bin total stack		127 mm (5.00") 235 mm (9.25")
Stack height RS 1113	upper bin total stack		127 mm (7.00") 330 mm (13.00")
Infeed height RS 1112	var. between	800 mm (31.50")	1054 mm (41.50")
Infeed height RS 1113	var. between	686 mm (27.25")	1022 mm (40.25")
Product orientation	spine leading		
Delivery height	876 mm (34.50")		
Input power	1.5 KVA, 50/60 Hz, 3 ~ (see voltage selection)		
Air requirement	85 l/min @ 5,5 bar (3 cfm @ 80 psi)		
Weight	500 kg (1100 lb)		
Noise level DIN 45635			85 dB(A)

Technical specification available upon request. The manufacturer reserves the right to change the technical specification without prior notice. (RS 11-EN-February 2010)



# RIMA SYSTEM

[www.rima-system.com](http://www.rima-system.com)

RIMA-SYSTEM Europe, Germany · RIMA-SYSTEM Atlanta LLC, USA · RIMA-SYSTEM Far East Pte Ltd, Singapore · RIMA-SYSTEM Corporate Office, USA  
SYSTEM UK Ltd, United Kingdom · CIVIEMME-SYSTEM S.r.l., Italy · RIMA-SYSTEM Support Center Central America, Guatemala